

Procedure to connect a Summa cutter with DAP (Design Access Program) from XPEL

XPEL needs a windows printer driver in order to drive the cutting plotters.

To connect a Summa cutter such as the Summacut or S class series cutter following procedure can be used.

1. Use an HPGL printer driver, for instance the following ones:

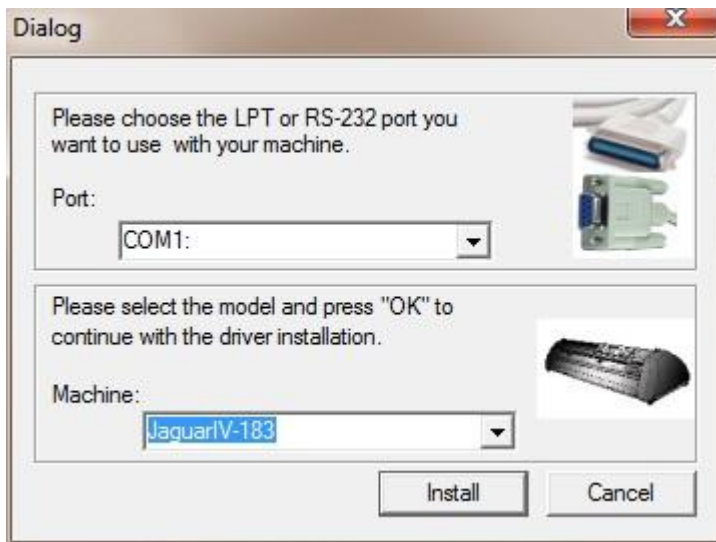
For 32 bit operating systems (windows XP, Vista, 7 and windows 8):

http://drivers.xpel.com/dl/Generic_HPGL_Cutter_32bit.zip

For 64 bit operating Systems (windows XP, Vista, 7 and windows 8):

http://drivers.xpel.com/dl/Generic_HPGL_Cutter_64bit.zip

2. Install the windows printer driver, select the non USB version of the driver, for example: Cut_x86_A_ComLpt_1.21-3.EXE or Cut_x64_A_ComLpt_1.21-3.EXE
During installation select the JaguarIV-183 driver.

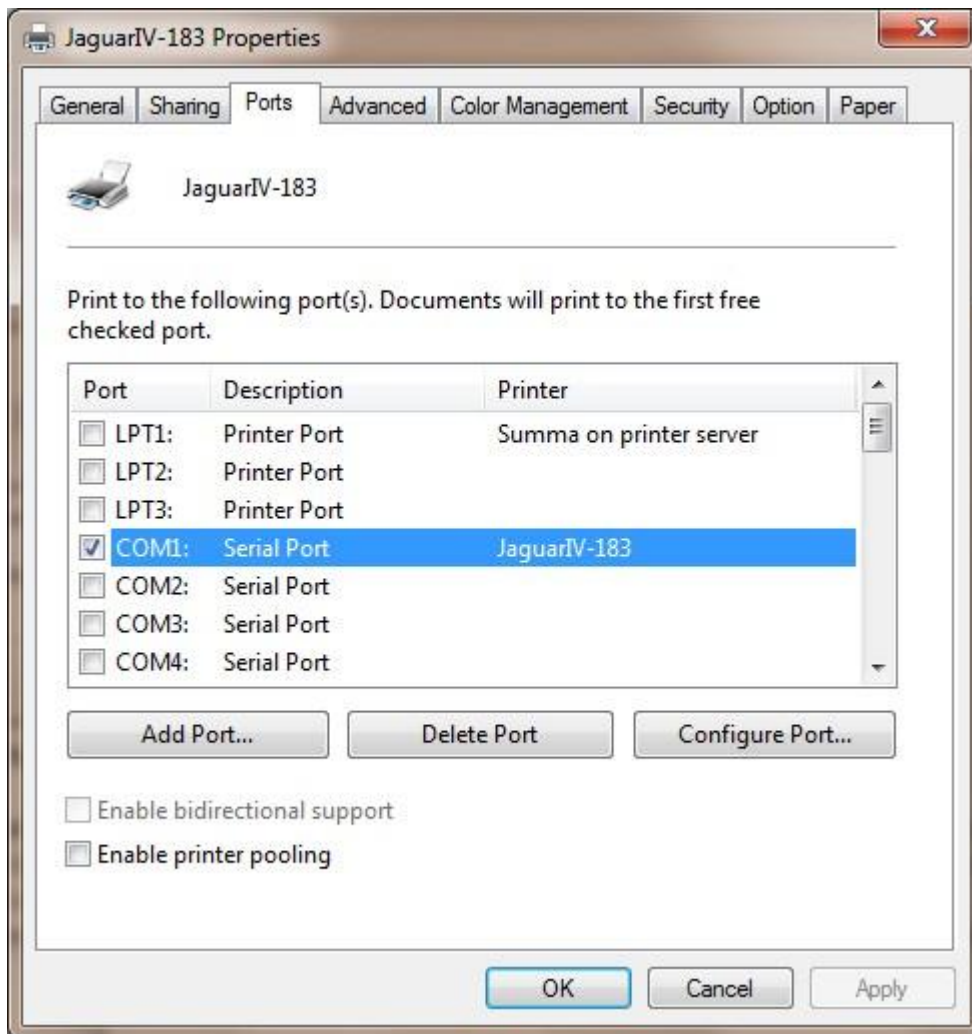


Click on Register Later in the last step of the installation.

3. If you want to connect through USB on the Cutter, then go to the control panel/touch screen of the cutter, select settings -> communication -> usb class, choose PRINTER UNI instead of SUMMA USB 1. Reboot the cutter. Windows will now automatically install a USB printer driver for this USB port, it will be called USB001 (virtual Printer port). On some operating systems windows will ask for a printer driver, choose a generic printer driver.
4. To connect to USB, change the port of the printer driver to USB001, in windows select devices & printers, then select the printer JaguariV



5. Right click on it and select “Printer properties”, select the “Ports” tab.



Change the port from COM1 to USB001 (Virtual printer Port for USB). Press OK.

NOTE: it is also possible on the S2 class to select an TCP/IP port instead of USB001, when the cutter is connected through an Ethernet cable.