

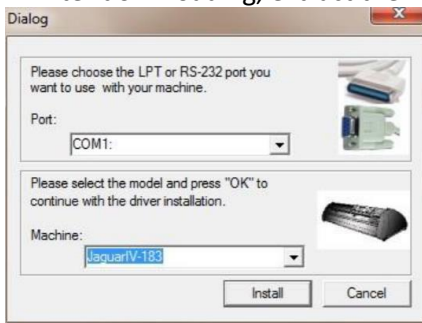
Procedure to Connect a Summa Cutter with DAP (Design Access Program)

To connect a Summa cutter such as the Summacut or S class series cutter, the following procedure should be used:

1. Use an HPGL printer driver, for 64-bit operating Systems (windows XP, Vista, 7 and windows 8):

https://www.xpel.com/web-assets/downloads/Generic_HPGL_Cutter_64bit.zip

2. After downloading, extract the zip containing install.exe. Run the file and select COM1 and JaguarIV-183.

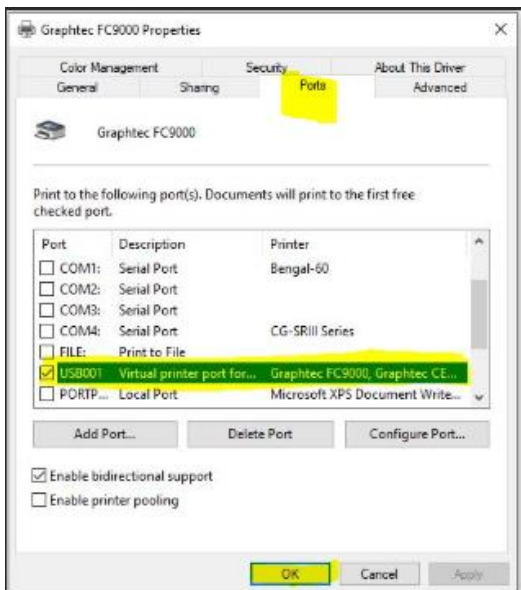


Click on Register Later in the last step of the installation.

3. To connect the plotter through USB, then go to the control panel/touch screen of the plotter, select settings -> communication -> USB class, choose Printer UNI instead of SUMMA USB 1. Reboot the plotter. Windows will now automatically install a USB printer driver for this USB port, it will be called USB001 (virtual Printer port).

* if Printer UNI doesn't work, please use Printer BIDI.

4. Once installed, to change the port to USB, go to devices > printers & scanners > select the plotter > manage > printer properties > ports > change to USB001.



5. Unplug and reconnect the plotter, to resync the settings. Try a test cut on DAP.